



V2 S.p.A.

Corso Principi di Piemonte, 65/67 - 12035 RACCONIGI (CN) ITALY

tel. +39 01 72 81 24 11 fax +39 01 72 84 050

info@v2home.com www.v2home.com



IL n.266-1
EDIZ. 22/01/2008

WinPPcl 4.0 USB drivers

for PROG2-USB and PROGTAG-USB

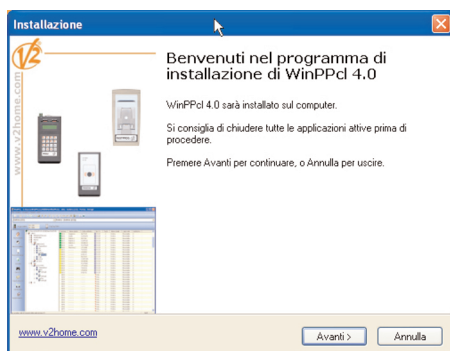
- I** GUIDA RAPIDA PER L'INSTALLAZIONE
DI SOFTWARE E DRIVER
- GB** QUICK GUIDE TO SOFTWARE
AND DRIVER INSTALLATION
- F** GUIDE D'INSTALLATION RAPIDE
DE LOGICIELS ET PILOTES
- E** GUÍA RÁPIDA PARA LA INSTALACIÓN
DEL SOFTWARE Y DRIVERS
- P** GUIA DE INSTALAÇÃO RÁPIDA DE
SOFTWARE E DRIVER

AVVERTENZE

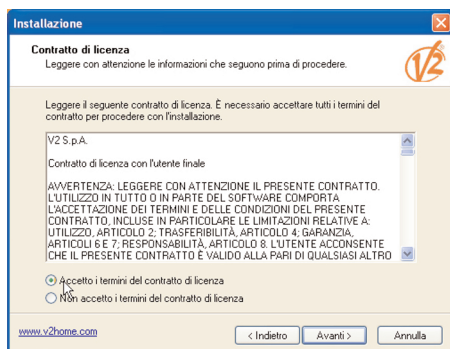
- Winppcl 4.0 è stato testato sui seguenti sistemi operativi: Vista, XP, 2000. Non si garantisce il corretto funzionamento su altri sistemi operativi.
- L'installazione di software e driver deve essere eseguita da amministratore.
- Prima di procedere con l'installazione è necessario richiedere il codice di abilitazione del PROG2-USB e del contratto al servizio di assistenza clienti V2 (assistenza@v2home.com)
- Prima di collegare il PROG2-USB / PROGTAG-USB al computer assicurarsi di aver completato l'installazione del software WinPPcl.

INSTALLAZIONE DEL SOFTWARE WINPPCL

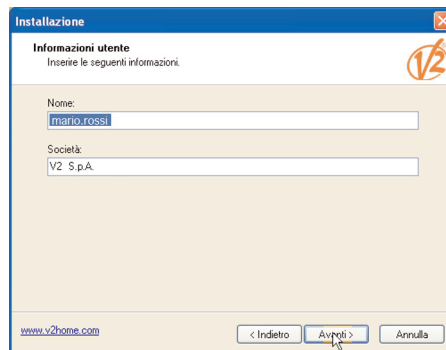
1. Effettuare il download del software dall'area riservata del sito www.v2home.com
Prima di avviare il setup assicurarsi che tutte le applicazioni siano chiuse e che il cavo USB non sia collegato al computer.
2. Avviare l'applicazione **Winppclsetup.exe**
3. Selezionare la lingua e premere su **Ok**
4. Selezionare **Avanti** per continuare, o **Annulla** per uscire.



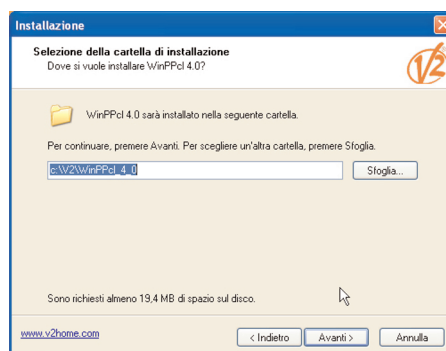
5. Selezionare **Accetto i termini del contratto di licenza** e premere **Avanti** per continuare.



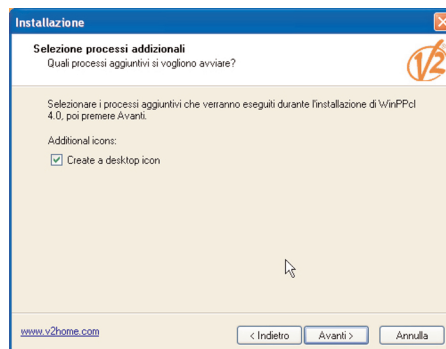
6. Inserire le informazioni richieste e selezionare **Avanti**.



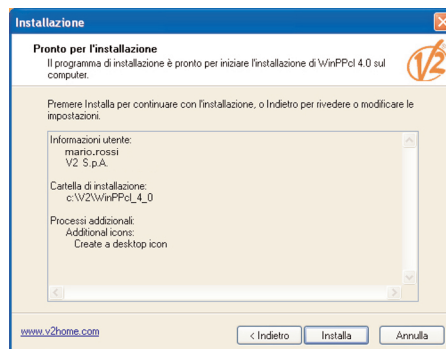
7. Il software verrà installato nella cartella c:\V2\WinPPcl_4_0. Se necessario modificare la directory di destinazione e selezionare **Avanti** per procedere.



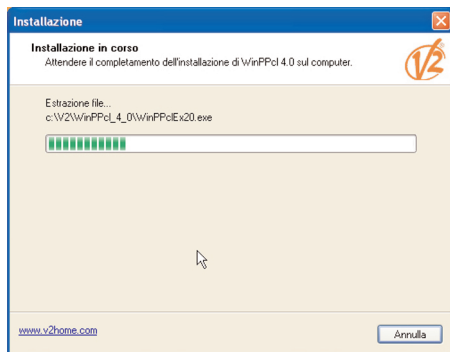
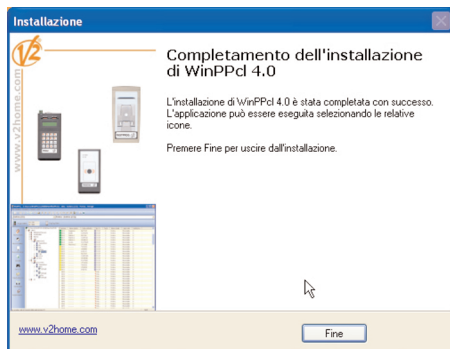
8. Se non si desidera creare un'icona sul desktop rimuovere il flag, quindi selezionare **Avanti**



9. Selezionare **Installa** per procedere



10. Attendere il completamento dell'installazione

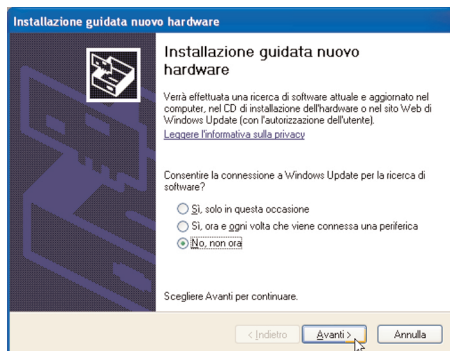
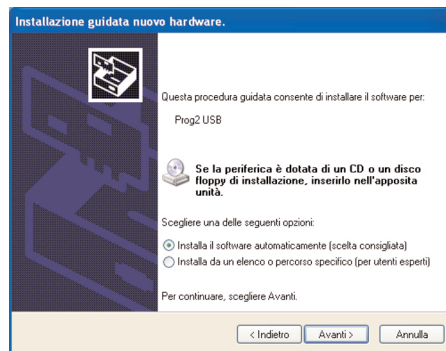
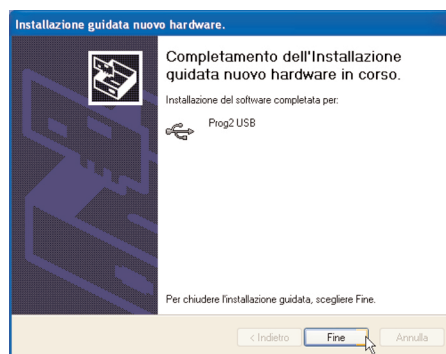
11. Selezionare **Fine** per completare l'installazione

INSTALLAZIONE DEI DRIVER

ATTENZIONE: prima di procedere assicurarsi di aver completato l'installazione del software WinPPcl.

L'installazione dei driver avviene in due fasi. Durante la prima fase vengono installati i driver USB; durante la seconda, analoga alla prima, vengono installati i driver del programmatore USB (PROG2-USB / PROGTAG-USB).

1. Collegare il cavo USB tra programmatore USB e computer.
2. Windows (Vista / XP / 2000) rileva automaticamente la nuova periferica. Seguire le seguenti indicazioni per l'installazione dei driver.
3. Windows apre automaticamente la finestra per l'installazione guidata di un nuovo hardware per l'installazione dei driver USB
4. Selezionare **No, non ora** e scegliere **Avanti** per continuare.

5. Selezionare **Installa il software automaticamente** e scegliere **Avanti**6. Selezionare **Fine** per completare l'installazione

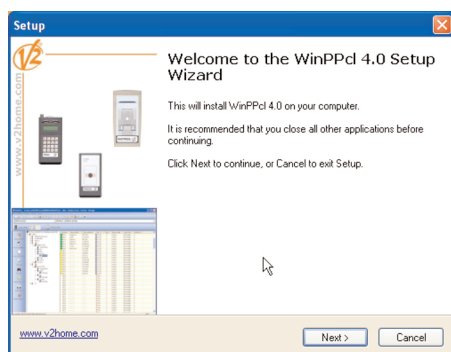
7. Windows apre automaticamente la finestra per l'installazione guidata di un nuovo hardware per l'installazione dei driver del programmatore USB.
8. Ripetere i punti **4,5,6** appena descritti.

WARNINGS

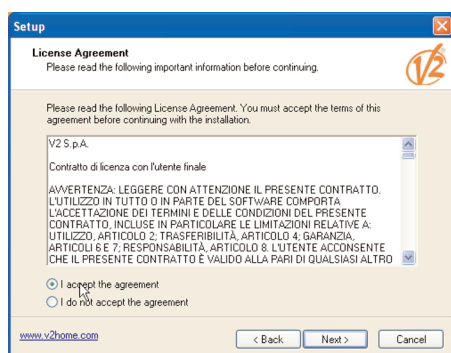
- WinPPcl 4.0 has been tested on the following operating systems: Vista, XP, 2000. No guarantee can be given that it will work properly on other operating systems.
- Software and driver installation must be carried out by an administrator.
- You will need to request the following start up ID before commencing: PROG2-USB and the V2 customer service contract (assistenza@v2home.com)
- Before connecting the PROG2-USB / PROGTAG-USB to the computer, make sure the installation of the WinPPcl software is complete.

INSTALLATION OF WinPPcl SOFTWARE

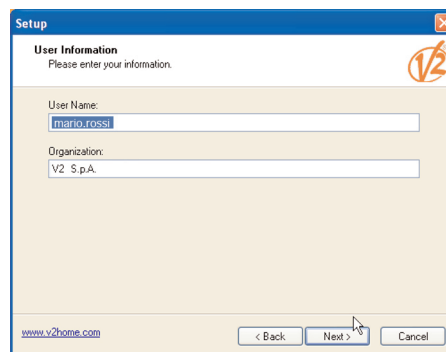
1. Download the software through the restricted area of the page www.v2home.com
Before launching the set-up, make sure that all the applications are closed and that the USB cable is not connected to the computer.
2. Start the **Winppclsetup.exe** application.
3. Select your language and press **Ok**
4. Select **Next** to continue and **Cancel** to exit.



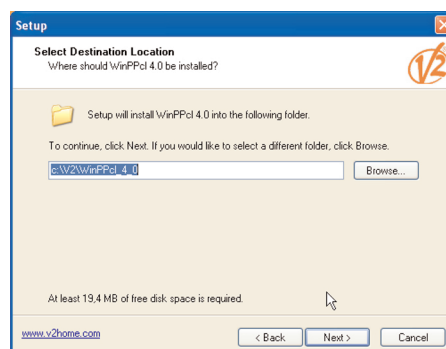
5. Select **I accept the agreement** and press **Next** to continue.



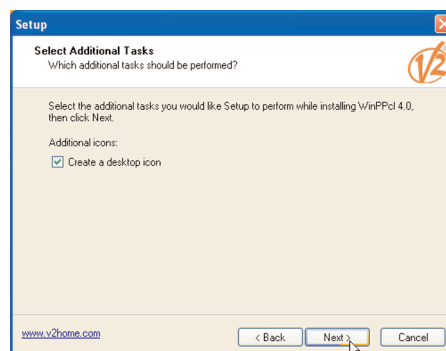
6. Type in the information requested and select **Next**



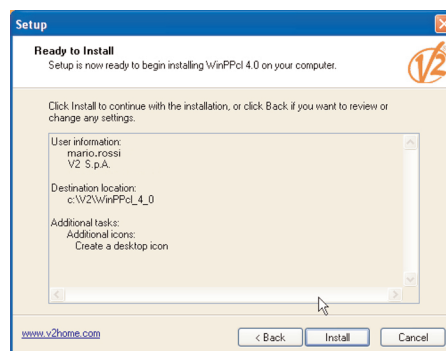
7. The software will be installed in folder c:\V2\WinPPcl_4_0. If necessary, change the destination directory and press **Next** to continue



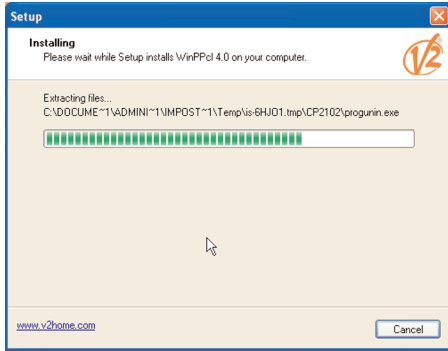
8. If you do not wish to create an icon on your desktop, remove the flag and then press **Next**



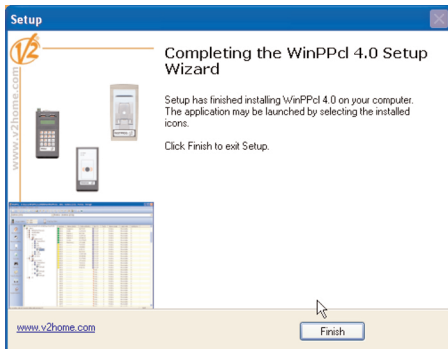
9. Press **Install** to continue



10. Wait for the installation to finish



11. Press **Finish** to complete the installation



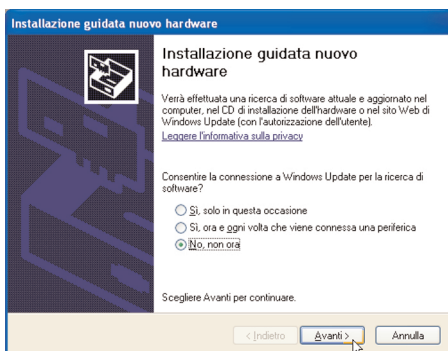
DRIVER INSTALLATION

IMPORTANT: prior to continuing, make sure the installation of the WinPPcl software is complete.

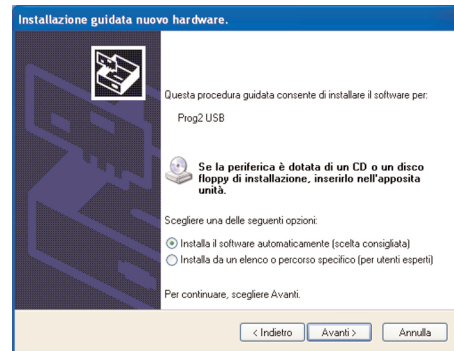
The driver installation is done in two stages.

The USB drivers are installed at the first stage; during the second stage, similar to the first one, the USB programmer (PROG2-USB / PROGTAG-USB) drivers are installed.

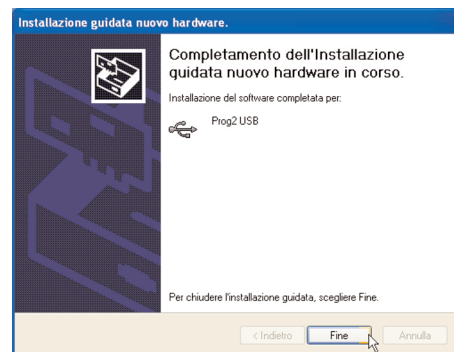
1. Link up the USB cable between the USB programmer and the computer.
2. Windows (Vista / XP / 2000) will automatically read the new peripheral. Comply with the following driver installation instructions.
3. Windows automatically opens the window for the step-by-step installation of new hardware for USB driver installation
4. Press **No, not now**, then press **Next** to continue.



5. Press **Install software automatically** and press **Next**



6. Press **Finish** to complete the installation



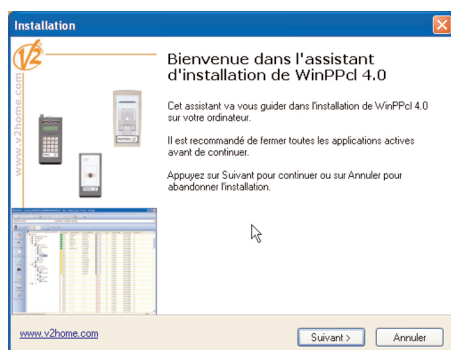
7. Windows automatically opens the window for the step-by-step installation of new hardware for USB programmer driver installation.
8. Repeat points **4,5,6** described above.

AVERTISSEMENTS

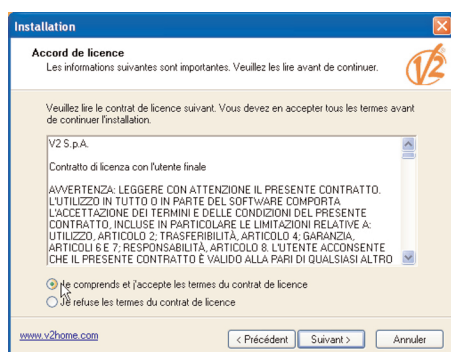
- WinPPcl 4.0 a été testé sur les systèmes d'exploitation suivants: Vista, XP, 2000. Le fonctionnement correct sur d'autres systèmes d'exploitation n'est pas assuré.
- L'installation de logiciels et pilotes doit être exécutée par l'administrateur.
- Avant de procéder à l'installation il est nécessaire de demander le code d'activation du PROG2-USB et du contrat au service d'assistance clients V2 (assistenza@v2home.com)
- Avant de connecter le PROG2-USB / PROGTAG-USB à l'ordinateur s'assurer d'avoir complété l'installation du logiciel WinPPcl.

INSTALLATION DU LOGICIEL WinPPcl

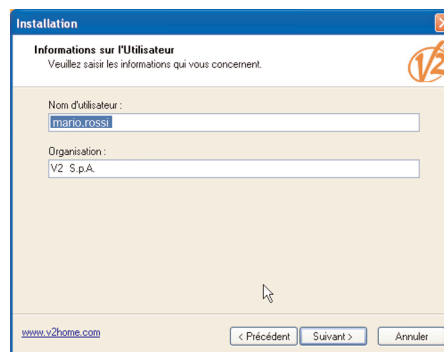
1. Télécharger le logiciel en se connectant à l'espace réservé de la page web www.v2home.com
Avant de lancer le setup s'assurer que toutes les applications soient fermées et que le câble USB ne soit pas relié à l'ordinateur
2. Lancer l'application **Winppclsetup.exe**
3. Sélectionner la langue et presser sur **Ok**
4. Sélectionner **Suivant** pour continuer, ou **Annuler** pour sortir.



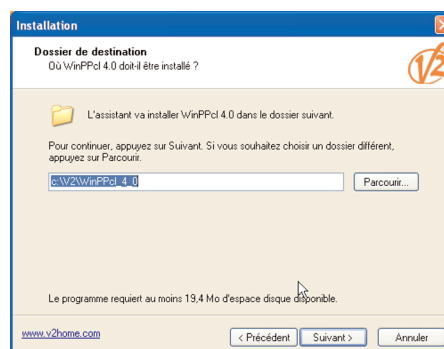
5. Sélectionner **Je comprends et j'accepte les termes du contrat de licence** et presser **Suivant** pour continuer.



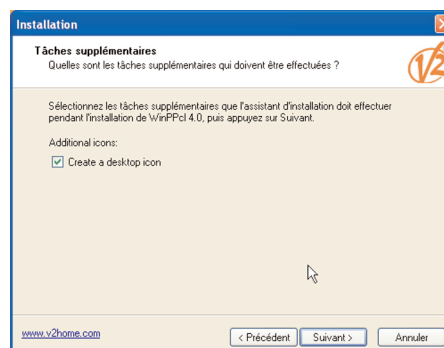
6. Insérer les renseignements demandés et sélectionner **Suivant**.



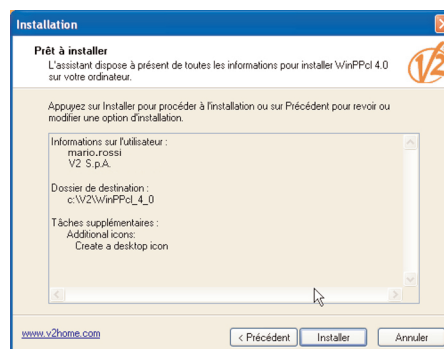
7. Le logiciel sera installé dans le dossier c:\V2\WinPPcl_4_0. Si nécessaire modifier le répertoire de destination et sélectionner **Suivant** pour procéder.



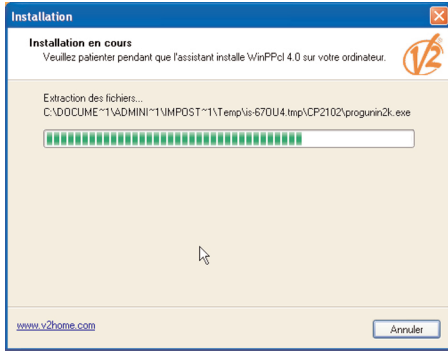
8. Si l'on désire ne pas créer une icône sur le desktop enlever le drapeau, donc sélectionner **Suivant**



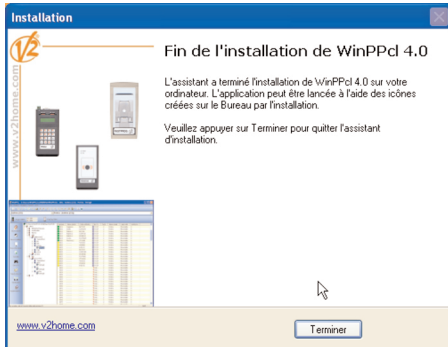
9. Sélectionner **Installer** pour procéder



10. Attendre l'achèvement de l'installation



11. Sélectionner **Terminer** pour compléter l'installation

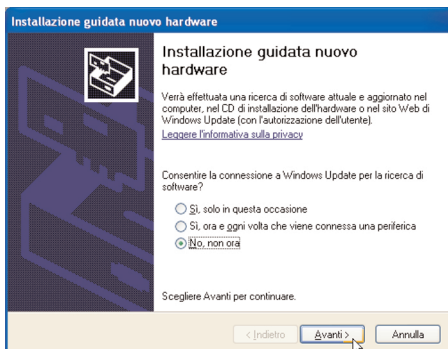


INSTALLATION DES PILOTES

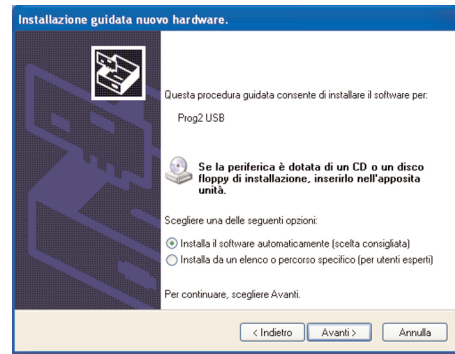
ATTENTION: avant de continuer s'assurer d'avoir complété l'installation du logiciel WinPPcl.

L'installation des pilotes se fait en deux phases. Pendant la première phase sont installés les pilotes USB; pendant la deuxième, analogue à la première, sont installés les pilotes du programmeur USB (PROG2-USB / PROGTAG-USB).

1. Connecter le câble USB entre programmeur USB et ordinateur.
2. Windows (Vista / XP / 2000) relève automatiquement la nouvelle unité périphérique. Suivre les indications suivantes pour l'installation des pilotes.
3. Windows ouvre la fenêtre automatiquement pour l'installation guidée d'un nouvel hardware pour l'installation des pilotes USB
4. Sélectionner **Non, pas maintenant** et choisir **Suivant** pour continuer.



5. Sélectionner **Installer le logiciel automatiquement et choisir Suivant**



6. Sélectionner **Terminer** pour compléter l'installation



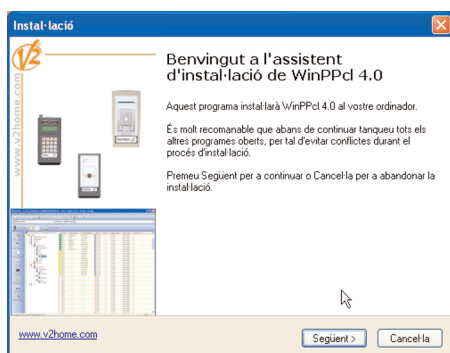
7. Windows ouvre automatiquement la fenêtre pour l'installation guidée d'un nouvel hardware pour l'installation des pilotes du programmeur USB.
8. Répéter les points **4,5,6** à peine décrit.

ADVERTENCIA

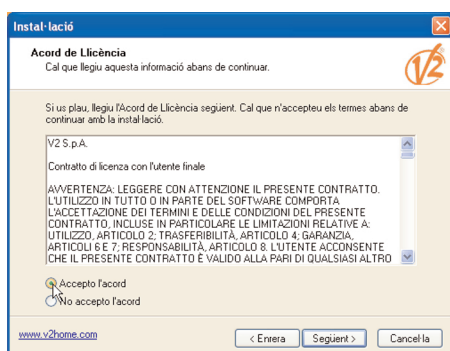
- WinPPcl 4.0 se ha probado con los siguientes sistemas operativos: Vista, XP, 2000. No se garantiza el funcionamiento correcto con otros sistemas operativos.
- La instalación del software y de los drivers debe ser ejecutado por el administrador.
- Antes de procede con la instalación es necesario solicitar el código de habilitación del PROG2-USB y del contrato de servicio de asistencia a clientes de V2 (assistenza@v2home.com)
- Antes de conectar el PROG2-USB / PROGTAG-USB al ordenador asegúrese de haber completado la instalación del software WinPPcl.

INSTALACIÓN DEL SOFTWARE WinPPcl

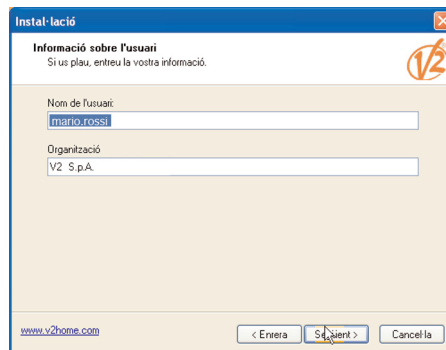
1. Descargar el software conectandose al área reservada de la página web www.v2home.com
Antes de iniciar la instalación asegúrese de cerrar todas las aplicaciones y que el cable USB no esté conectado al ordenador
2. Inicie la aplicación **Winppclsetup.exe**
3. Seleccione el idioma y pulse **Ok**
4. Seleccione **Següent** para continuar o **Cancel·la** para salir.



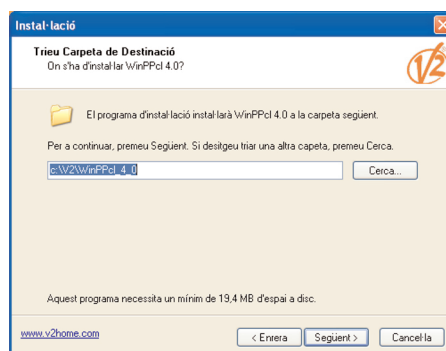
5. Seleccione **Acepto l'acord** y pulse **Següent** para continuar.



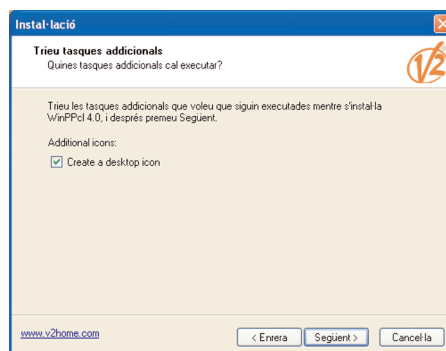
6. Inserte la información solicitada y seleccione **Següent**



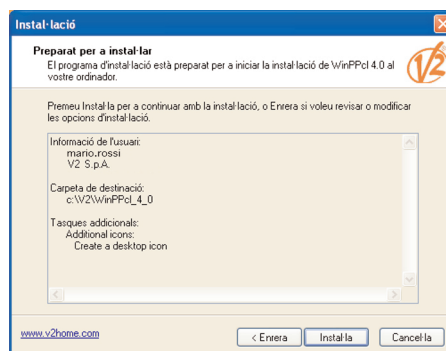
7. El software se instalará en la carpeta `c:\V2\WinPPcl_4_0`. Si es necesario modifique el directorio de destino o seleccione **Següent** para proseguir



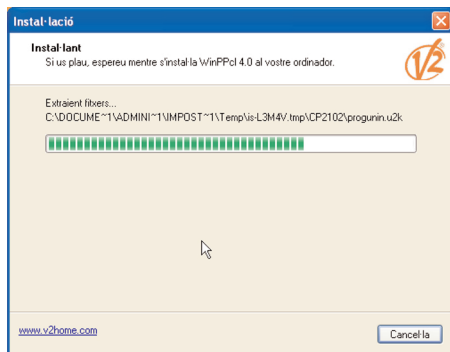
8. Si no desea crear un icono en el escritorio retire la verificación, luego seleccione **Següent**



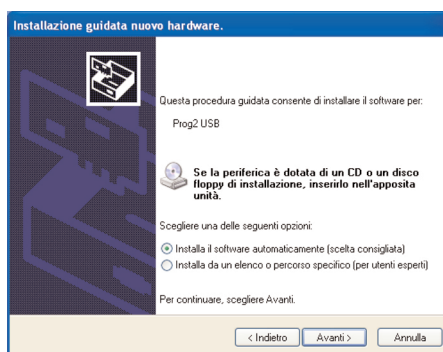
9. Seleccione **Instal·la** para proseguir



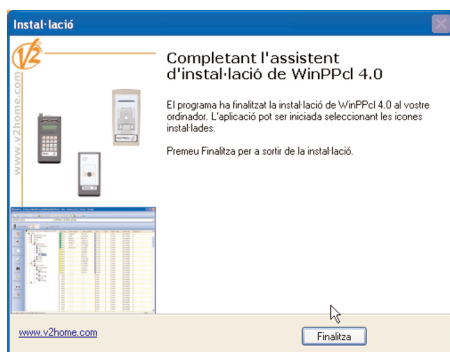
10. Espere a que la instalación concluya



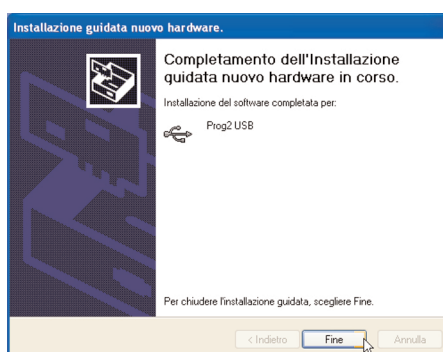
5. Seleccione **Instalar automáticamente** y pulse **Adelante**



11. Seleccione **Finalitza** para concluir la instalación



6. Seleccione **Fin** para concluir la instalación



INSTALACIÓN DE LOS DRIVERS

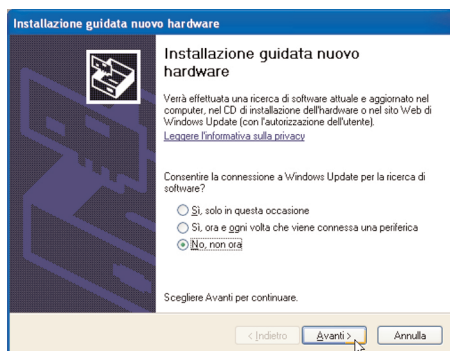
ATENCIÓN: antes de proceder asegúrese de haber concluido la instalación del software WinPPcl.

La instalación de los drivers ocurre en dos etapas. Durante la primera etapa se instala el driver USB; durante la segunda, similar a la primera, se instalan los drivers del programador USB (PROG2-USB / PROGTAG-USB).

1. Conecte el cable USB entre el programador USB y el ordenador.
2. Windows (Vista / XP / 2000) advierte automáticamente el nuevo periférico. Proceda atendiendo las siguientes instrucciones para la instalación de los drivers.
3. Windows abre automáticamente la ventana para la instalación guiada de un nuevo hardware para la instalación del driver USB
4. Seleccione **No, no ahora** y elija **Adelante** para continuar.

7. Windows abre automáticamente la ventana para la instalación guiada de un nuevo hardware para la instalación del driver del programador USB.

8. Repita los puntos 4, 5 y 6 antes descritos.

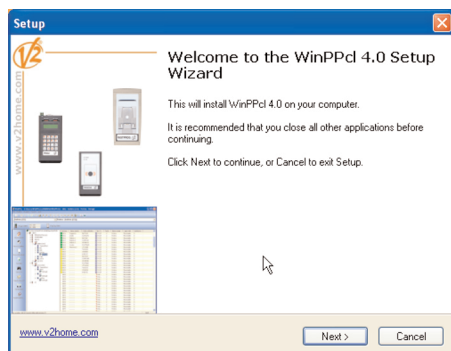


AVISOS:

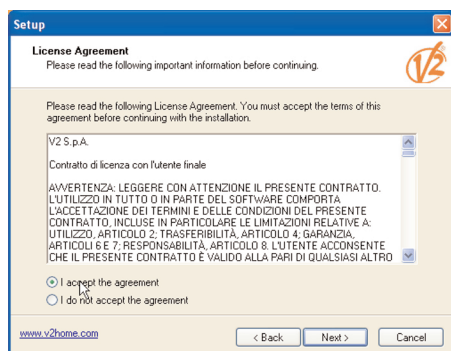
- O WinPPcl 4.0 foi testado nos seguintes sistemas operativos: Vista, XP, 2000. Não é garantido o funcionamento correcto noutros sistemas operativos.
- A instalação dos softwares e drivers deve ser executada pelo administrador.
- Antes de proceder à instalação, é necessário pedir o código de activação do PROG2-USB e do contrato ao Serviço de Apoio a Clientes da V2 (assistenza@v2home.com)
- Antes de ligar o PROG2-USB / PROGTAG-USB ao computador, certificar-se de que a instalação do software WinPPcl está concluída.

INSTALAÇÃO DO SOFTWARE WinPPcl

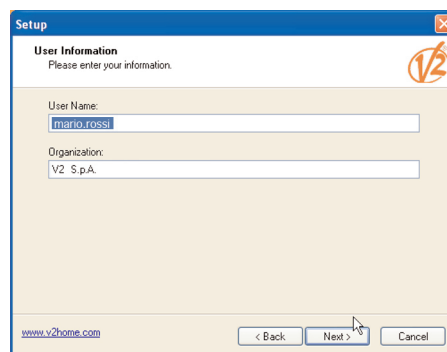
1. Fazer o download do software acedendo à área reservada na página www.v2home.com
Antes de executar o setup, certificar-se de que todas as aplicações estão fechadas e que o cabo USB não está ligado ao computador.
2. Executar a aplicação **Winppclsetup.exe**
3. Seleccionar o idioma desejado (por exemplo: Inglês) e premir **Ok**
4. Seleccionar **Next (Seguinte)** para continuar e **Cancel (Cancelar)** para sair



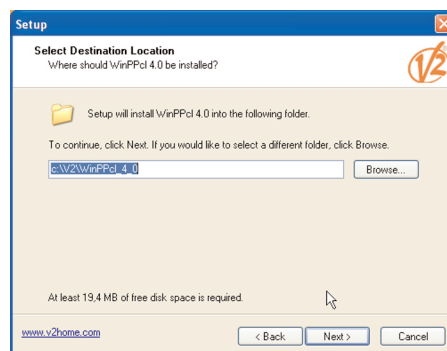
5. Seleccionar **I accept the agreement (Aceito o contrato)** e premir **Next (Seguinte)** para continuar.



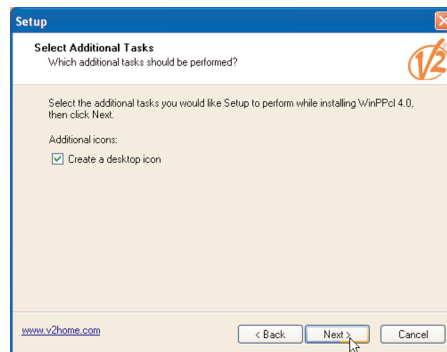
6. Introduzir as informações solicitadas e seleccionar **Next (Seguinte)**



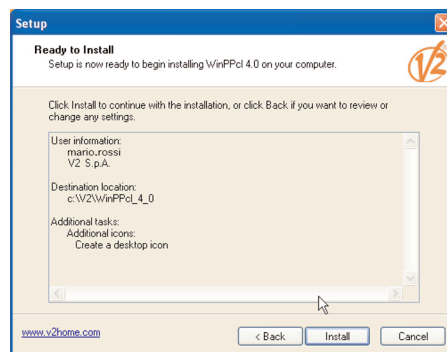
7. O software será instalado na pasta c:\W2\WinPPcl_4_0. Se necessário, alterar o directório de destino e clicar em **Next (Seguinte)** para continuar.



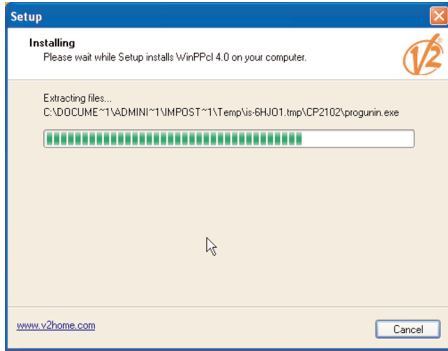
8. Se não desejar criar um atalho no ambiente de trabalho, retirar o visto e, em seguida, clicar em **Next (Seguinte)**.



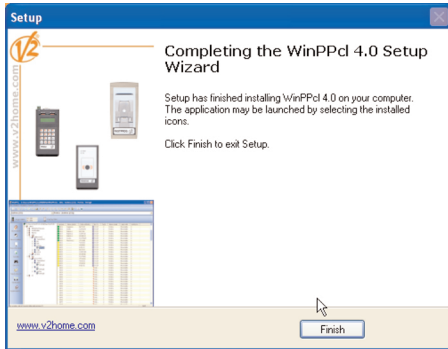
9. Premir **Install (Instalar)** para continuar



10. Aguardar até concluir a instalação



11. Seleccionar **Finish (Concluir)** para completar a instalação.

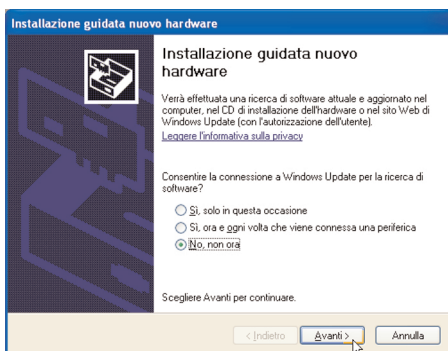


INSTALAÇÃO DOS DRIVERS

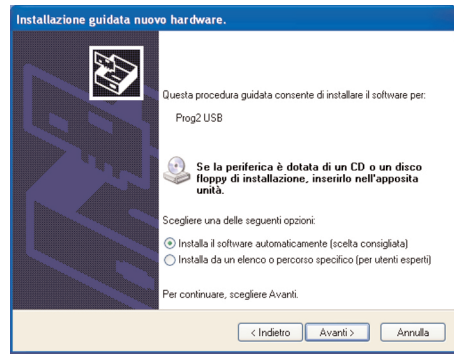
ATENÇÃO: antes de continuar, certificar-se de que a instalação do software WinPPcl está concluída.

A instalação dos drivers faz-se em duas etapas. Durante a primeira etapa são instalados os drivers USB; durante a segunda, similar à primeira, são instalados os drivers do programador USB (PROG2-USB / PROGTAG-USB).

1. Ligar o cabo USB entre o programador USB e o computador.
2. O Windows (Vista / XP / 2000) detecta automaticamente o novo periférico. Seguir as instruções abaixo para a instalação dos drivers.
3. O Windows abre automaticamente a janela para a instalação guiada de um novo hardware para a instalação dos drivers USB.
4. Seleccionar **No, not now (Não, agora não)** e escolher **Next (Seguinte)** para continuar.



5. Seleccionar **Install software automatically (Instalar o software automaticamente)** e premir **Next (Seguinte)**.



6. Seleccionar **Finish (Concluir)** para completar a instalação.



7. O Windows abre automaticamente a janela para a instalação guiada de um novo hardware para a instalação dos drivers programador USB.
8. Repetir os pontos 4, 5, 6 acima descritos.



V2 S.p.A.

Corso Principi di Piemonte, 65/67 - 12035 RACCONIGI (CN) ITALY

tel. +39 01 72 81 24 11 fax +39 01 72 84 050

info@v2home.com www.v2home.com